

Crisis Simulations International

Your People Your Decisions Your Real-Life Simulation

Crisis Simulations International's Active Shooter™

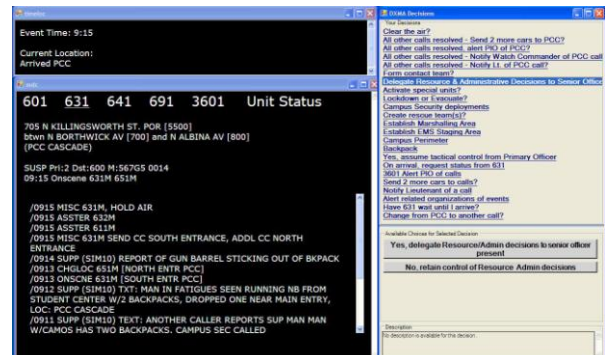
A realistic, hands-on learning tool for effectively managing an active shooter event

The news has been filled with reports of people with weapons invading a school, university campus, office building, church, or healthcare facility and randomly or deliberately killing occupants. More than ever, police departments, security officers, campus police and law enforcement academies find they need to anticipate and prepare for an active shooter event in their communities.

In the past, officers trained to isolate, contain and evacuate (ICE) an active shooter event while waiting for HNT or SWAT teams. Since Columbine, tactics and the thinking behind them have changed radically; officers now train on how to react immediately while an event is unfolding.

Crisis Simulations International's Active Shooter™ stress-tests the policies and tactics employed in law enforcement training that will be used when a real situation develops. It presents the decisions a commanding officer faces and actions he/she takes while directing immediate action rapid deployment (IARD) during an active shooter event, including

- Forming teams & choosing who will lead them
- Establishing a perimeter
- Locking down and/or evacuating the area
- Calling in other emergency resources
- Deciding if or when to inform the public
- Timing the deployment of rescue teams
- Creating staging areas for incoming police units and support services



Active Shooter simulation screen

SIMULATION FLEXIBILITY

Using Crisis Simulations' patent-pending DXMA™ technology, simulations can be customized to fit a police department's training needs, including

- Interface re-design for department MDCs or other communication systems
- Length and complexity of the situation
- Number of shooters
- Location and venue (i.e. a school, office environment, hospital, public arena)
- Number of commanding officer's direct reports
- Insertion of SWAT, HNT or K-9 teams and/or bomb squads
- A multi-day event (i.e., the Mumbai attacks)
- Incorporation of injuries, casualties, or hostages



CRISIS SIMULATIONS INTERNATIONAL, LLC

Crisis Simulations International Active Shooter™

AFTER THE TRAINING

Active Shooter provides after-action decision reports detailing the choices officers were provided, the decisions they made, and when they made those decisions. The report can be printed and kept on file for verification of training completed.*

Immediate review of the after-action report allows both student and instructor to review what decisions were made and when the student made them. This helps identify gaps in understanding what happens in an active shooter event and the student's own response to it. Crisis Simulations can provide facilitation after the training to review:

- Were the department's policies, procedures and protocols followed?
- If not, why?
- What gaps in officer training or communication were uncovered?
- What were the cascading effects of the decisions the commanding sergeant made?
- Did politics in the community or university influence choices?
- Were decisions made with insufficient information?
- Did the commanding officer have the autonomy to explore all available options?



Police officers receiving training via a Crisis Simulations International simulation

Crisis Simulation International developed the Active Shooter simulation for the Portland Police Bureau, following accepted protocols and PPB directives, to complement training for its supervisors.

According to Portland Police Bureau Commander (retired) Greg Hendricks, "*The realism of the simulation is impressive. The number of decisions and pace at which they had to be made is truly representative of what those in law enforcement face in an active shooter incident.*"

He added, "*Simulations could become one of the most significant advances in training and preparing those in law enforcement for this kind of event.*"

* Crisis Simulation's Active Shooter simulation follows US Department of Homeland Security HSEEP guidelines.



CRISIS SIMULATIONS INTERNATIONAL, LLC

P.O. Box 549, Tualatin, Oregon 97062

(503) 885-9631

(503) 213-6070 fax

www.crisissimulations.com

info@crisissimulations.com